

# New York Electrical Show

THE annual Electrical Exposition held in New York was more resplendent than ever before, this year. It was discontinued during the war and, judging by the size of the crowds that visited the exposition this year, the public was pleased indeed to see once more on exhibit the latest advances in electrical wizardry. The exposition at New

every member of the family, from little Tommy Edison, Jr., up to old Grandad puffing contentedly on his old and tried "Meersch-chaum." What, between electrical washing machines that wobbled around, or back and forth, including some that oscillated up and down, with electric lights shining thru their soapy depths, electrical sirens and powerful X-ray machines, together

that we have seen for some time. The hot soapy water was forced up thru and around the dishes in great fashion, and if any microbes or bacteria could lift one of their hind legs after passing thru this scalding ordeal, well, they have got to show us, that's all! We told mother and the girls about it as soon as we arrived home, and as soon as the mail order houses start selling these



At the New York Electrical Show, Which the Editors Visited, There Were Several Ingenious and More or Less Practical Electric Apparata Exhibited and Demonstrated. A Few of the More Interesting and Useful Things That We Noted There, Are Illustrated and Described Herewith, for the Benefit of Readers Who May Not Have Had the Opportunity of Witnessing This Wonderful and Educational Electrical Display.

York was staged in the Grand Central Palace, a very handsome building and one that provided a commodious space for the beautiful display of the various apparatus, instruments and devices, which included everything imaginable from a specially sensitive micro-ampere meter, the needle of which indicated in millionths of an ampere, the current produced by applying your dampened finger to an iron nail and a one-cent piece—up to a ponderous electrical storage battery truck, or a complete electrical dairy, where the electrically operated vacuum milker was demonstrated several times each day.

The accompanying illustration shows just a few samples of the hundreds of electrical devices exhibited and which appealed to

with wireless sparks and a few dozen other choice crashes and flashes thrown in for good measure, the electrically interested populace was thoroughly entertained. Excellent band music was furnished afternoons and evenings during the week of the exposition.

## WHAT WE SAW AT THE SHOW

A very clever vase light was demonstrated and what "got our goat" was why—out of 100,000,000 people in America—some one had not thought of it before. It instantly converts any vase, no matter how big or small, into a beautiful electric lamp with a silk shade costing as much as you have money to buy yards of silk for. See Figure 1. As we walked down the aisle, our attention was arrested by one of the most efficient looking electric dish washers

electric dish washers on the installment plan, I and Mike McStinchy, the chief clerk at the office, have promised ourselves one apiece. Take a shot at Figure 2.

As we hove to, around the corner on one of the floors, we were almost "flabbergasted" trying to count the total number of electric vacuum cleaners exhibited. There must 'a been a million of 'em! One particularly large and interesting machine was being pushed slowly over a large Persian rug by a dusky demonstrator. "Some vacuum cleaner," quoth we. Egad, we had the wrong family this time! This machine (see Fig. 3) was an electric rug and carpet washer. When we got close up to it we saw that it had a rapidly oscillating scrub-

(Continued on page 815)



drop scenes like the one shown at Fig. 12, are painted, are no larger than an 8x10 inch photo. Photos are often used to paint scenes from or to help the artist in depicting correctly certain foreign views, such as Chinese buildings, et cetera.

Stage scenes are painted in strips, i.e., when several painters are working upon the bridge, they all work across the canvas at an average height of say 6 feet. After this 6 foot strip across the canvas has been painted, the frame is lowered this amount, and a new six foot strip across the scene is painted, and so on, until the whole canvas is finished.

A new departure in scene painting is that involving the use of a large *air brush* which is shown at Fig. 12. One of the most successful scenic artists who was the first to make use of the air-brush in painting scenes on such a large scale as this, is Mr. D. M. Aiken of New York. The beautiful and truly magnificent color effects known only to the air-brush artist, have been available for a number of years in connection with small photograph retouching; and now that these wonderfully beautiful color creations are available to the stage scene painter, we can expect to see some extraordinarily entrancing stage settings.

## New York Electrical Show

(Continued on page 761)

brush at the front of it, which was rubbing the soap suds and water thru the rug faster than Aunt Jemima ever thought of doing it in her palmiest house-cleaning days. The gentleman in charge of this exhibit asked us to come right up and inspect the operation, and we did. The rug was quite dirty where the machine had started, but the path over which it had slowly past and washed, as well as dried, was astonishingly clean. Now, thanks to this invention, rugs and carpets in large hotels, theaters and dwelling houses can be cleaned right on the floor *without removal*.

All kinds of electrical kitchen utensils were exhibited, some of them in actual operation, from electric toaster up to gigantic five horse power dough mixers in the electric bakery, which cuft and swatted the 100-pound batch of bread dough, as if it had been only as big as a finished loaf of bread. The bread was baked in this bakery in electric ovens and served with "current" jelly to the hungry crowd. The bread was good, we tried it, and we did not feel any ill effects from the "current" jelly, altho we did expect a shock or two. See Figure 5. The new electric reflection heaters, composed of a small electrically heated coil placed in the focus of a copper reflector, were displayed at many spots. You can feel the blast of heat reflected from these, even when the heaters are at a distance of 10 to 15 feet, whenever you pass one of these heaters. Shown at Fig. 6.

One of the electric washing machines of particular efficiency, and which appeared to be extraordinarily "full of pep," is that illustrated at Fig. 7. This was called the "Locomotive" Washer. The glass tank rushed back and forth with startling velocity, forcing the hot soapy water *thru the clothes* with a natural pressure and in a way which would not injure them.

Passing on, we finally arrived at the corner where the electrical "Docs" held forth. The air in this region was surcharged with high tension electricity as the powerful Coolidge X-ray tubes shot forth their penetrating rays, while now and then a crashing spark jumped across a one-foot gap on the transformer exciting the tube, not to mention the crashing of several dozen small high-frequency machines, which were being



## "Don't tell me you never had a chance!"

"Four years ago you and I worked at the same bench. We were *both* discontented. Remember the noon we saw the International Correspondence Schools' advertisement? That woke me up. I realized that to get ahead I needed special training, and I decided to let the I. C. S. help me. When I marked the coupon I asked you to sign with me. You said, 'Aw, forget it!'

"I made the most of my opportunity and have been climbing ever since. You had the same chance I had, but you turned it down. No, Jim, you can't expect more money until you've trained yourself to handle bigger work."

There are lots of "Jims" in the world—in stores, factories, offices, everywhere. Are *you* one of them? Wake up! Every time you see an I. C. S. coupon your chance is staring you in the face. Don't turn it down.

Right now over one hundred thousand men are preparing themselves for bigger jobs and better pay through I. C. S. courses.

**You** can join them and get in line for promotion. Mark and mail this coupon, and find out how.

### INTERNATIONAL CORRESPONDENCE SCHOOLS BOX 6209, SCRANTON, PA.

Explain, without obligating me, how I can qualify for the position, or in the subject, before which I mark X.

- |  |  |
|--|--|
| <input type="checkbox"/> ELECTRICAL ENGINEER         | <input type="checkbox"/> SALESMANSHIP            |
| <input type="checkbox"/> Electric Lighting and Wires | <input type="checkbox"/> ADVERTISING             |
| <input type="checkbox"/> Electric Wiring             | <input type="checkbox"/> Window Trimmer          |
| <input type="checkbox"/> Telegraph Engineer          | <input type="checkbox"/> Show Card Writer        |
| <input type="checkbox"/> Telephone Work              | <input type="checkbox"/> Sign Painter            |
| <input type="checkbox"/> MECHANICAL ENGINEER         | <input type="checkbox"/> Railroad Trainman       |
| <input type="checkbox"/> Mechanical Draftsman        | <input type="checkbox"/> ILLUSTRATING            |
| <input type="checkbox"/> Machine Shop Practice       | <input type="checkbox"/> Cartooning              |
| <input type="checkbox"/> Toolmaker                   | <input type="checkbox"/> BUSINESS MANAGEMENT     |
| <input type="checkbox"/> Gas Engine Operating        | <input type="checkbox"/> Private Secretary       |
| <input type="checkbox"/> CIVIL ENGINEER              | <input type="checkbox"/> BOOKKEEPER              |
| <input type="checkbox"/> Surveying and Mapping       | <input type="checkbox"/> Stenographer and Typist |
| <input type="checkbox"/> MINE FOREMAN or ENG'N       | <input type="checkbox"/> Cert. Pub. Accountant   |
| <input type="checkbox"/> STATIONARY ENGINEER         | <input type="checkbox"/> TRAFFIC MANAGER         |
| <input type="checkbox"/> Marine Engineer             | <input type="checkbox"/> Railway Accountant      |
| <input type="checkbox"/> Ship Draftsman              | <input type="checkbox"/> Commercial Law          |
| <input type="checkbox"/> ARCHITECT                   | <input type="checkbox"/> GOOD ENGLISH            |
| <input type="checkbox"/> Contractor and Builder      | <input type="checkbox"/> Teacher                 |
| <input type="checkbox"/> Architectural Draftsman     | <input type="checkbox"/> Common School Subjects  |
| <input type="checkbox"/> Concrete Builder            | <input type="checkbox"/> Mathematics             |
| <input type="checkbox"/> Structural Engineer         | <input type="checkbox"/> CIVIL SERVICE           |
| <input type="checkbox"/> PLUMBING AND HEATING        | <input type="checkbox"/> Railway Mail Clerk      |
| <input type="checkbox"/> Sheet Metal Worker          | <input type="checkbox"/> AUTOMOBILE OPERATING    |
| <input type="checkbox"/> Textile Overseer or Supt.   | <input type="checkbox"/> Auto Repairing          |
| <input type="checkbox"/> CHIMIST                     | <input type="checkbox"/> AGRICULTURE             |
| <input type="checkbox"/> Navigation                  | <input type="checkbox"/> French                  |
|  | <input type="checkbox"/> Penitry Raising         |
|  | <input type="checkbox"/> Italian                 |

Name \_\_\_\_\_  
Present Occupation \_\_\_\_\_ 7-25-19  
Street \_\_\_\_\_  
and No. \_\_\_\_\_  
City \_\_\_\_\_ State \_\_\_\_\_

## WANTED!



Rapid advancement to high Government Positions. "No layoffs" because of STRIKES, WARS, or the WHIMS OF SOME PETTY BOSS. Pleasant work. Traveling constantly. Vacation at full pay. THE POSITION IS YOURS FOR LIFE. Country residents and city residents stand the same chance. Common-sense education sufficient. Political influence NOT REQUIRED. Write immediately for free list of Government positions now open. Don't delay. Every day you lose means the loss of just so much chance of your early appointment.

TRICKS, PUZZLES, JOKES, TOYS, games, novelties, doll and cane racks, plays, wigs, stage supplies, escapes and illusions. Large 1919 catalogue free. OAKS MAGICAL CO. Dept. 549 Oshkosh, Wis.

MAIL THIS COUPON TO FRANKLIN INSTITUTE  
Dept. M 101 ROCHESTER, N. Y.  
This coupon filled out as directed, entitles the sender to (1) free sample examination questions; (2) a free copy of our book, "Government Positions and How to Get Them;" (3) free list of positions now open; and (4) to consideration for Free Coaching for the examination here checked.

.. Railway Mail Clerk (\$1300 to \$2150)	.. Bookkeeper (\$1100 to \$1800)
.. Postoffice Clerk (\$1200 to \$1650)	.. Customs Positions (\$900 to \$1500)
.. Postoffice Carrier (\$1200 to \$1650)	.. File Clerks (\$1100 to \$1800)
.. Rural Mail Carrier (\$920 to \$2160)	.. Stenographer (\$1100 to \$1500)
	.. Clerk in the Departments at Washington (\$1100 to \$1500)

Name \_\_\_\_\_  
Address \_\_\_\_\_  
Use this before you lose it. Write plainly. M 101

**Learn Watchwork, Jewelrywork and Engraving** A fine trade commanding a good salary, and your services are always in demand. Address HOROLOGICAL Department, Bradley Institute, Peoria, Ill., for our latest catalog.





## Get an Ideal Model Aeroplane for Christmas!

Building and Flying Ideal Model Aeroplanes is real sport because Ideal Models are accurate, scale-reduction duplicates of real aeroplanes. They look like the machines they are copies of; have parts and fittings like real ones, and rise from the ground or water by their own power and fly in the air. Build one. Learn about aeroplanes, how they are built and how they fly. Ideal Model Aeroplane Construction Outfits make building easy. They contain all parts, fittings, materials, plans drawn to scale and full building and flying instructions. You make and assemble the parts like a real Aeroplane mechanic.

### You Can Build and Fly Accurate, Scale-Models of These Famous Aeroplanes

You can get a Complete Construction Outfit to build an absolute duplicate, scale-reduction Model of any of these well-known machines:

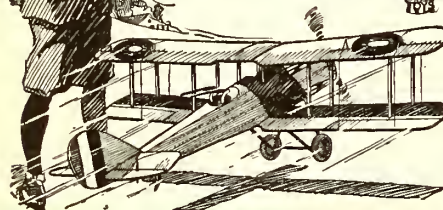
**NC-4** (Naval-Curtiss Seaplane). The first 'plane to fly across the Atlantic Ocean. 4 1/2 ft. Model. Shown above.  
**DeHAVILLAND Battle 'Plane** (DeH-4). The fighting 'plane used by the American Aces in the World War. 3 ft. Model. Shown below.  
**Curtiss Military Tractor**. The 'plane used to train our Aviators. The first aeroplane to cross the English Channel. 3 ft. Model.  
**Bleriot Monoplane**. A famous French 'plane used in the War. 3 ft. Model.  
**Taube Monoplane**. The early German dove-like machine. 3 ft. Model.  
**Cecil Peeli Racer**. A racing-type aeroplane with a record for distance flights.

Ideal Model Aeroplane Construction Outfits for building any of the above Aeroplanes are sold by Leading Toy, Sporting Goods and Department Stores. Ask for them at your store. Be sure you get IDEAL Model Aeroplanes because they are the only ones that are true copies of actual Aeroplanes.

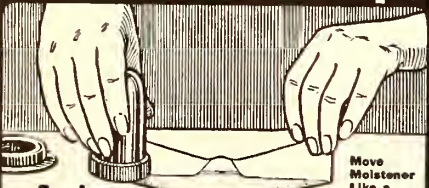
Send for the Ideal Aeroplane Book. Tells all about Ideal Aeroplanes and Flying Toys; gives complete descriptions and prices; contains list of stores where you can get them. Get this book, sure. 48 pages. Sent Postpaid for 10c in stamps.

### Ideal Airplane & Supply Co.

Making Model Aeroplanes Since 1911  
 159-161 Wooster St., Cor. W.  
 Houston St., New York City.



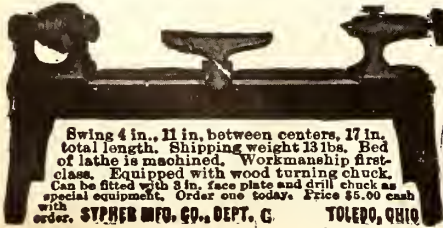
## Don't Lick Stamps



### or Envelopes

Moisten them with THE ARGUS MOISTENER. Always ready for use. Sanitary. Moisten flap or stamp neatly, quickly—in series or singly. Beautifully nickel-plated. Highly desirable for OFFICE or HOME

Useful Xmas gift. Will be keenly appreciated by social letter writer or office employee.  
**PRICE, PREPAID \$1.50**  
 ARGUS MFG. CO. 402-B N. Paulina St. Dept. 27 CHICAGO



Swing 4 in., 11 in. between centers, 17 in. total length. Shaft 13 lbs. Bed of lathe is machined. Workmanship first-class. Equipped with wood turning chuck. Can be fitted with 3 in. face plate and drill chuck as special equipment. Order one today! Price \$5.00 cash with order. **STYPER MFG. CO., DEPT. C, TOLEDO, OHIO**

demonstrated by experts for the benefit of a "long-suffering" public. This exhibit also included electric lamp heat baths in the form of cabinets of various shapes and sizes fitted with mirrors and several dozen high candle-power lamps inside of them, as well as nifty, small-size X-ray outfits for dentists. You know, now-a-days, they say a patient knows as much about his tooth as a dentist does, unless the "Doc" has an honest-to-goodness X-ray machine and can examine the "interior" of your roots and jaw bone to see whether or not you have any tumors or abscesses sprouting there. So, this year, more than ever before, everybody that was up on the technique of modern dentistry, was particularly interested in this display. One of the special tooth-jerkers' X-ray tooth analyzers, is illustrated at Fig. 9.

### WIRELESS HOLDS SWAY AT THE ELECTRICAL SHOW.

At one corner of the radio exhibit we ran into the latest thing in wireless, the radio-goniometer or wireless direction finder. See Fig. 10. This comprises a coil of several turns of wire mounted on a pivoted frame, so that the coil can be turned around to any degree of the compass. The shaft is fitted with a pointer and scale, so that the exact point of the compass to which it points can at once be determined. Thousands of these devices were used during the war to locate enemy wireless stations, when the latter were fired on by our artillery, sometimes when they were many miles away and out of sight. Wireless telephony was demonstrated at the Electrical Show, also, as shown at Fig. 15. Audion bulbs were used in practically all of the wireless instruments exhibited both for transmitting and receiving. A new and interesting "direct current" wireless transmitter, giving a musical note without a rotary converter, was demonstrated.

As before mentioned, a complete electric dairy was exhibited, with several choice cows which were milked with an electric vacuum milker several times a day, for the edification of the cityites, who occasionally manifest the idea that our lacteal products come from so lowly a source as the country roadside milkweed. Some extremely interesting and clever "coin-in-the-slot" dispensing machines were exhibited. The company supplying these machines have made them as nearly human and fool-proof as possible. Not only do these machines dispense everything imaginable—from a "cootie-proof" hair brush to a theater ticket to see a Mary Pickford six-reeler, but they are fitted with one of the most marvelous scientific coin rejectors ever conceived. They are guaranteed to refund your money unless you feed them with guaranteed solid U. S. coin, and this coin must not have any holes in it; no smoothed out edges and no figures or designs missing. Also, the weight must be right, the composition must be right, and the size must be correct. Apparently, this machine has got the eagle-eyed bank cashier backed off the map when it comes to telling a "counterfeit" from a "real" coin. See Fig. 12.

Electric sirens were exhibited (see Fig. 13) in various sizes, some of which can be heard for several miles, and which are used with great success by fire departments. Many electric devices and attachments were shown to aid the seamstress and tailor and a new line of cloth-cutting machines were demonstrated. One of these machines, in the hands of an experienced operator, will cut thru a hundred thicknesses of cloth at once. One style has a motor operated steel wheel which does the cutting, while another larger type has a knife shaped like a razor blade which is oscillated vertically several hundred times per minute. See Fig. 14.

Electric auto trucks operated with powerful storage batteries were exhibited and caused much comment among those who were interested in transportation and freight haulage problems. See Fig. 16.

## COPPER AERIAL WIRE



We have just received several thousand pounds of No. 14 pure copper aerial wire which we are selling for 40c per pound. This wire runs 80 feet to the pound and is guaranteed to be satisfactory by us. Postage and insurance must accompany all orders, otherwise they will be shipped by express collect.

We are listing a few more of our exceptional bargains below:

**Telephone Relays**—with six contacts and dust proof cover—shipping weight, 2 lbs. ....each \$1.50  
**Powerful Horseshoe Magnets**—made of high grade Norwegian iron 5 inches high—shipping weight, 2 lbs. ....each .30  
**Condensers**—1/2, 7/10, 1, 1 1/2 and 2 Micro Farads—all types contained in indestructible metal case—shipping weight, 2 lbs. ....each .50  
**Resistance Coils**—wound to 4500 ohms resistance with German silver wire—shipping weight, 1 lb. ....each .40  
**Induction Coils**—primary one ohm, secondary 55 ohms—shipping weight, 1 lb. ....each .50  
**Telephone Receivers**—standard 75 ohm bi-polar, complete with cord—shipping weight, 2 lbs., each .80  
**Dry Cells**—slightly used—shipping weight, per doz., 26 lbs. ....per doz. 1.25  
**Small Complete Telephones**—ready for mounting on your wall—work on two dry cells—shipping weight, 4 lbs. ....each 3.00  
**Telephone Ringers**—630 ohms—shipping weight 2 lbs. ....each .80

Send 5c for our illustrated catalogue showing many other items at our bargain prices.

### ELECTRICAL SPECIALTY COMPANY

Dept. E—48 So. Front St., Columbus, Ohio

## REAL INDOOR FOOTBALL



A new game that gives you all the sport and thrill of a regular outdoor contest.

The players must make their own choice of moves and direct the operation of their teams just as if they had live men on the field.

Every point in the real game is covered and every move can be duplicated.

The most exciting game on the market to-day. You'll never grow tired of it. Attractively put up with full directions.

Shipped Anywhere \$1.00 in United States postpaid

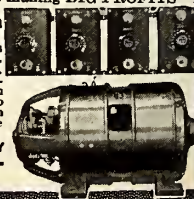
Order today while they last

UNIQUE GAME & TOY SERVICE  
 1328 Broadway, New York City

## Battery Charging Your Biggest Money-Maker

\$150 TO \$350 CLEAR PROFIT A MONTH WITH THIS HB-32 BATTERY CHARGER

You can recharge 32 6-volt auto batteries, or equivalent in 12- or 24-volt batteries, at one time, for 10c to 15c each. Customer pays 75c to \$1.50. Figure the profits yourself. Others are making BIG PROFITS with HB Battery Charging. Why not YOU? Get busy NOW—add those extra profits to your income. Small investment. Puts This Money-Maker in Your Garage. Balance on easy monthly terms. Outfit easily pays for itself. Absolute Money-back Guarantee. No burn-outs, or renewals. Easy to install and operate. Only attention needed is occasional tiling. Write TODAY for full information. **HOBART BROTHERS COMPANY** Box 123 E. Troy, Ohio. Successful Mfrs. since 1893.



## Send To-day for the "Electrical Worker's Friend"

An electrical book of 66 motor drawings with complete instructions for rewinding and reconnecting A.C. motors. Special at \$3.50  
 Or write for full particulars of this valuable book.  
**SMITH & SMITH PUBLISHING CO.**  
 Dept. B. 1524 LOWRIE ST., N.E., PITTSBURGH, PA.